

pad printing and
what we make out of it!



**Take advantage of a cost-effective method
of optical print image inspection:**

PRINT IMAGE MONITORING

Increasing manufacturing costs as well as the printing on expensive, high-quality products require more and more a preferably early inspection of the printed image during the printing process. The faster an inaccurate print image is recognized, the sooner action can be taken or even corrected.

But fully automatic vision systems are relatively expensive and, therefore, not always cost-effective to use.

We would like to present you with a well-priced alternative for vision system for printed images:

A camera captures the actual picture of the printed part and displays it on the LCD monitor. With this, an enlarged view of the printed image is available to the operator.

An immediate reaction is possible, if there are any deviation from the intended print quality. The print image inspection can contribute to a higher efficiency.



Print image monitoring for optical inspection – detailed information:

A camera is mounted above the loading/unloading station of the print object. The focal length of the camera lens is chosen according to the print image size and distance between the camera and print object.

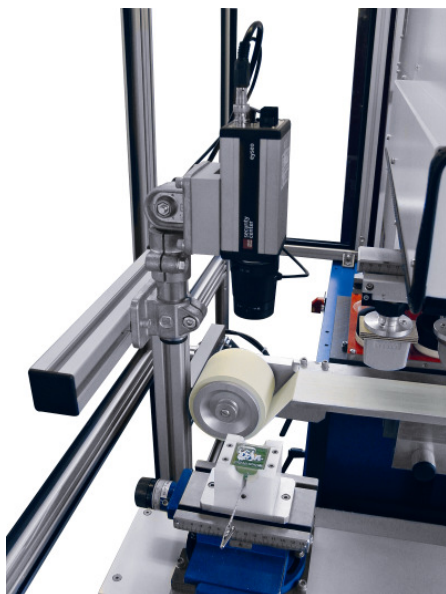


As soon as the printed part reaches the unloading station, the section selected by the camera setup is shown on the LCD monitor.



The picture shown is not stored, so that the actual picture is always displayed.

In this way, the operator is able to see the optically enlarged printed image. At the same time, one can avoid the exposure of body parts (e.g. head) to the machine's moving parts, since the printed image is shown outside of the printing area on the monitor. So, in addition to providing optical control, safety is enhanced. The LCD monitor can be assembled to the machine's mounting frame or at another place as preferred, but with a maximum distance of 5 m between camera and monitor (cable connection).



With this optical vision control system, a simple, cost-effective method for image control is provided, which is especially suitable for applications with a loading/unloading station (e.g. applications with a shuttle table).

The operator can evaluate the printing quality and make corrections immediately if necessary (e.g. ink adjustment, cleaning etc.). If printing on high-quality articles, the removal of a faulty print image before the drying has taken place can enable the re-use of the part and reduce the amount of rejected parts.

The print image monitoring contributes to higher print quality and productivity.

We can provide the appropriate equipment for your monitoring needs, completely tailored to the requirements of your print image.

Please contact us – we will be pleased to help you!